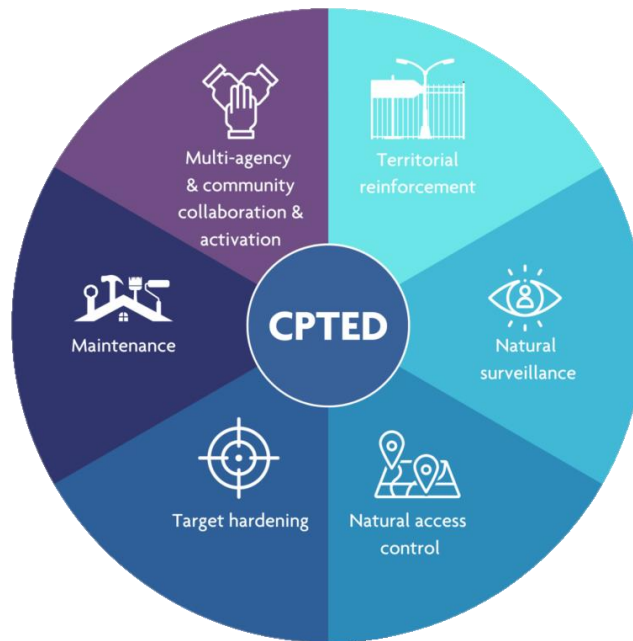


CRIME PREVENTION THROUGH ENVIRONMENTAL DESIGN

What is CPTED?

- CPTED is the idea that physical environments can be altered to reduce the incidence and fear of crime, while improving the safety and security of appropriate users.
- The best ways to prevent crime is by finding and fixing opportunities for crime before they become a regular part of a building or area, or before criminals have the chance to notice them.



Natural Surveillance

The use of design concepts directed towards keeping intruders easily observable.

- Ensure adequate and uniform lighting around your structure.
- Parking areas should be visible from windows and doors.
- Properly maintain landscaping to prevent blind spots.
- Dumpsters and fences should not create blind spots or hiding areas.
- Ground shrubbery should be no higher than 2 feet tall.
- Tree canopies should be no lower than 6 feet tall.
- Use video or electronically monitored surveillance for entrances.

Territorial Reinforcement

The use of physical or symbolic cues to show an area is owned and controlled, making it less inviting for crime.

- Front porches and sidewalks can create a transitional area.
- Property lines should be defined (fences, gates, shrubberies, hedges, pavement treatments, etc.).
- Street addresses should be easily visible, five inches tall, and made of non-reflective material.

Access Control

The use of physical elements to keep unauthorized persons out of a structure or area.

- Sidewalks and landscaping should be designed to direct visitors only to entrances.
- Signage should clearly mark exits, entrances, and other important locations.
- Use barriers such as fencing and gates to guide or restrict access.
- Streets should be designed to discourage out/through traffic.

Target Hardening

The use of physical elements to prohibit entry or access.

- Window locks.
- Dead bolts for doors with a one-inch minimum throw.
- Interior/tamper proof door hinges.
- Door locks and exterior doorknobs should be a minimum of 40 inches from adjacent windows.
- Sliding glass doors should have one permanent door, with the moving door having a locking device and a pin.
- Delivery bays should be secured with locks

Maintenance & Management

Providing policies and design elements can foster “pride of place” and attract more wanted activities in public spaces.

- Use durable, vandal resistant materials and street furniture.
- Remove offensive graffiti.
- Be prompt when responding to litter pick up and repairs.
- Regularly check locks, lights, and other security features to ensure they are functioning properly.
- Commercial properties need explicit security policies and procedures, and ensure employees are properly trained on each one.
- Commercial properties with close-in parking should be available to nighttime employees.

Call us today to schedule your FREE survey!

COMMUNITY RELATIONS UNIT

(850) 891-4251



Tallahassee Police Department

234 E. 7th Avenue

Tallahassee, FL 32303

(850) 891-4200